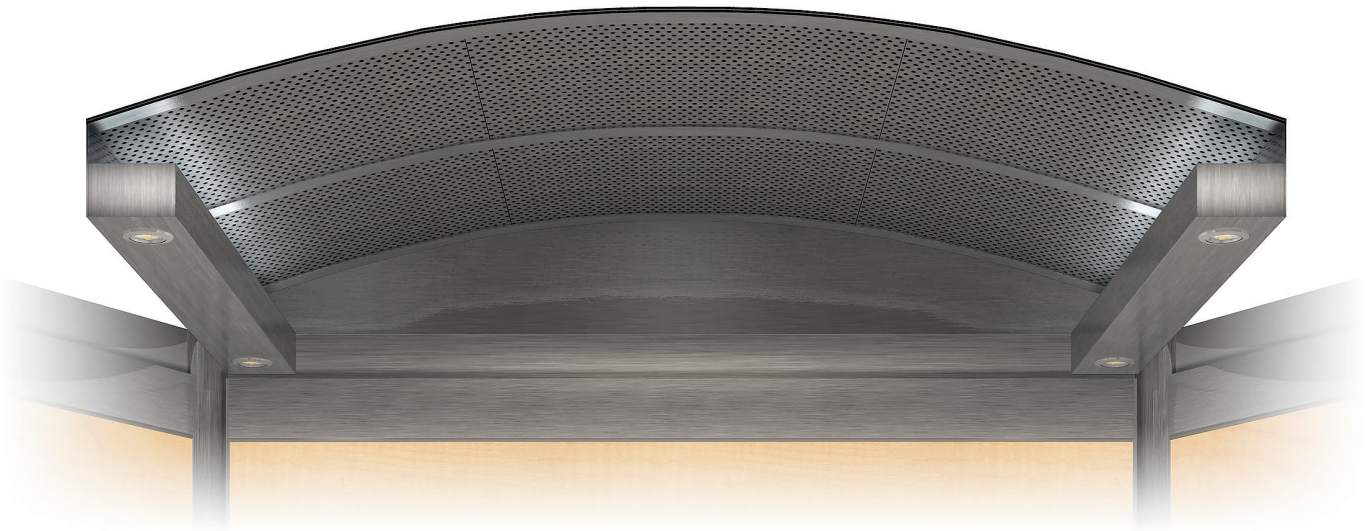




VAULTED CEILING

MODEL:
VALE
STOWE

INSTALLATION INSTRUCTIONS



TOOLS REQUIRED

- Measuring Tape
- Drill
- Ladder
- 3” Paint Brush and latex paint for painting the perimeter of the canopy (If required)
- Mechanical lifter (such as a Gennie Super Hoist) **Recommended**

- 1.1. When your new ceiling arrives, transport it near to the cab you will be renovating and organize the crates so that they will be easily accessible.

The crates contents are itemized on its surface.

- 1.2. Carefully un-crate the ceiling package, making sure that none of the components are damaged.
- 1.3. Check the colours, features, and dimensions of the components against your order before you begin removing the existing elevator ceiling.

If you have any questions at this point, contact ECR before going ahead with any part of the installation.



Note: The installation instructions for a Vale and Stowe ceiling are the same. The ceilings only differ in the configuration of the pans in the center (Vale having curved pans, Stowe having straight pans).

For technical support on the Bristol Ceiling installation, please contact us at:

Elevator Cab Renovations
Office: (613) 745-4870
Toll Free: 1-877-745-4870
ecr@elevatorcabs.ca

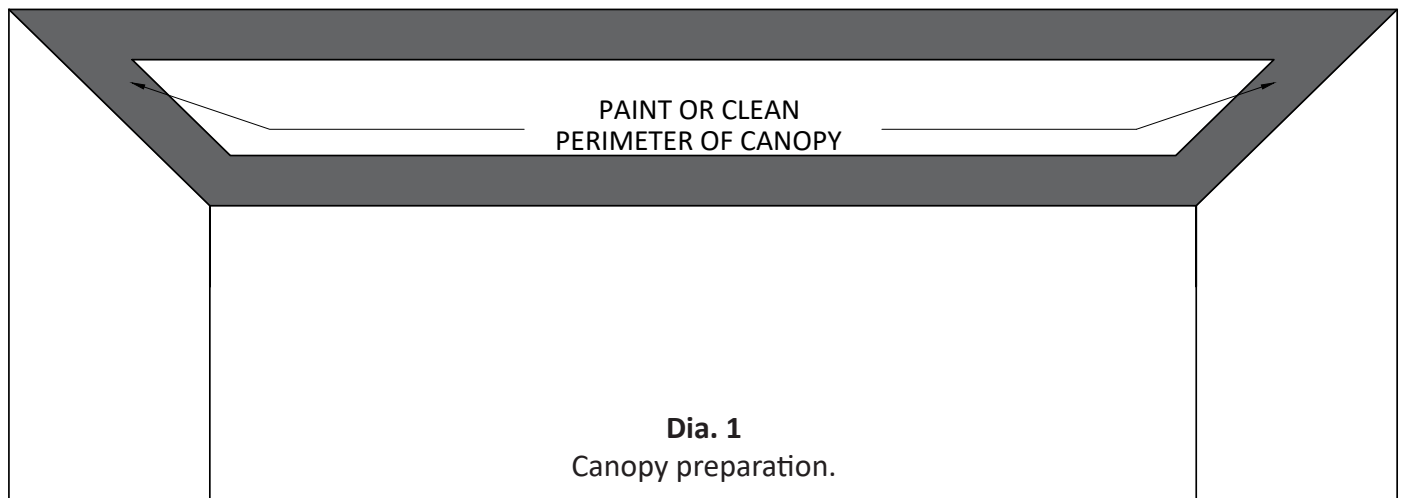
Office Hours : 6:30 AM to 3:30 PM Eastern Standard Time

SECTION 2: PREPARE FOR THE CEILING INSTALLATION

- 2.1. Unless specified otherwise, your new ceiling will be inset from the front and rear shell walls by approximately 2". Please consult drawings accompanying ceiling.
- 2.2. Prepare canopy surface to accept the new ceiling by completing one of the following options
 - a) Sand, clean and re-paint the perimeter of the canopy with a desired color. Black or white are typical for this type of application
 - b) If the canopy is in good condition, a simple cleaning may be all that is required.



Note: It is suggested that for both options a or b, a minimum of 6" of the perimeter of the canopy should be addressed by the process chosen.

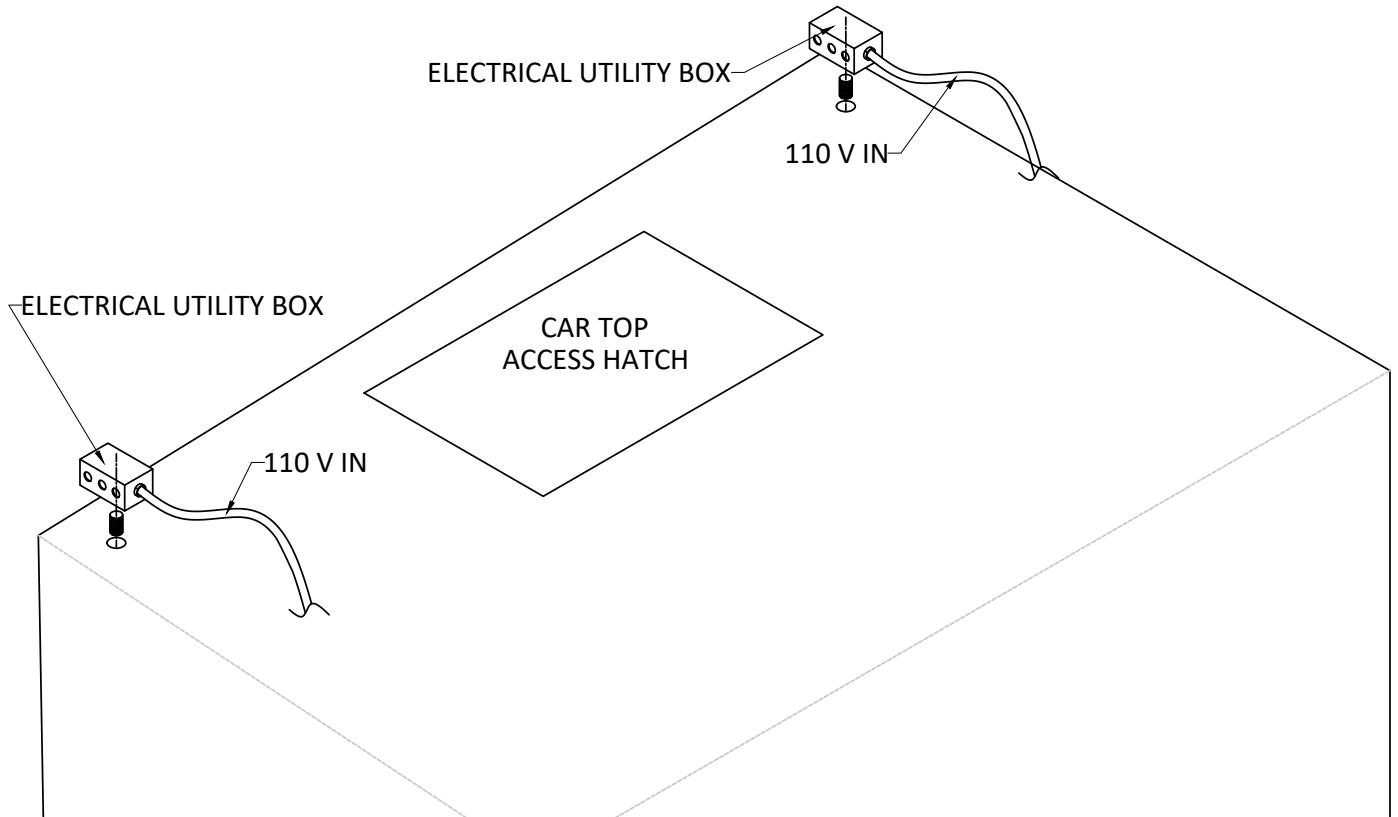


SECTION 3: ELECTRICAL CONNECTIONS



Before continuing with the ceiling panel installation, it is a good time to prepare the electrical connections.

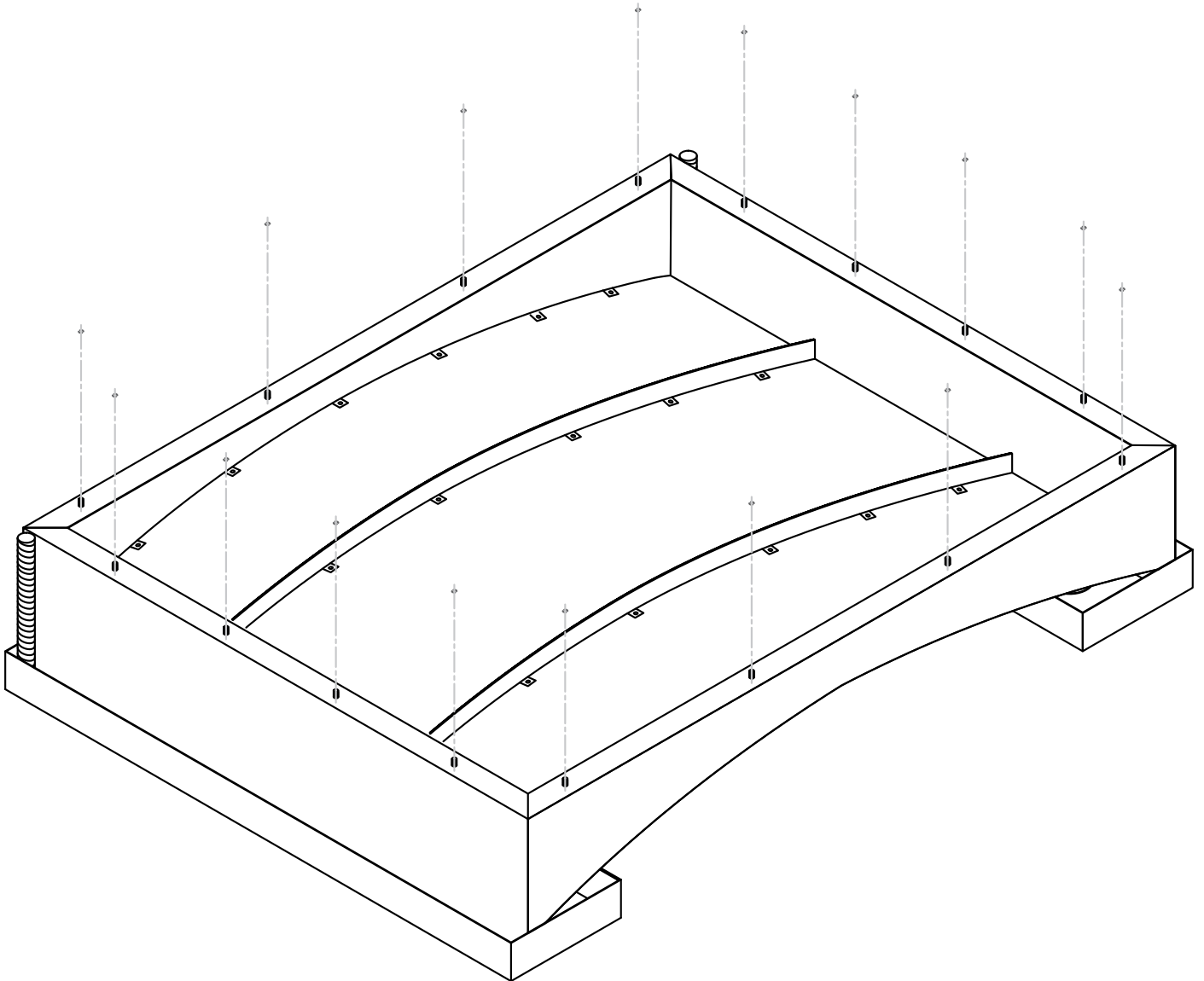
- 3.1. The ceiling power supplies are located within the ceiling troughs. Connect the wiring to the individual lights (if they are not connected) using the threaded connectors.
- 3.2. The lighting system runs on 110V AC to a low voltage power supply. The installer must provide 110V to the lighting system. The system can be hard wired (utility box and connectors are provided) (Dia. 2).
- 3.3. Mount an electrical utility box (provided) on top of the canopy (outside on the car), preferably at the rear of the car (near the hatch, near the outer edge of the canopy). This will provide the junction for the 110 V from the car top to the 110 V that will feed the power supplies for the LED disk lights and the LED wrap fixtures.



Dia. 2
Electrical box on canopy

SECTION 4: INSTALLING THE CEILING

- 4.1. Using the ceiling template provided, transfer the mounting holes on the top of the ceiling to the template. Hold the template against the car canopy and transfer the mounting hole locations (Dia. 3).



Dia. 3

SECTION 4: INSTALLING THE CEILING (CONTINUED)



All Vaulted ceilings should be raised into position using a mechanical lifter (such as a Genie Super hoist) rated with enough capacity. Lifting the ceiling into position without proper equipment can result in damage to the ceiling, the surrounding angles and/or personal injury.



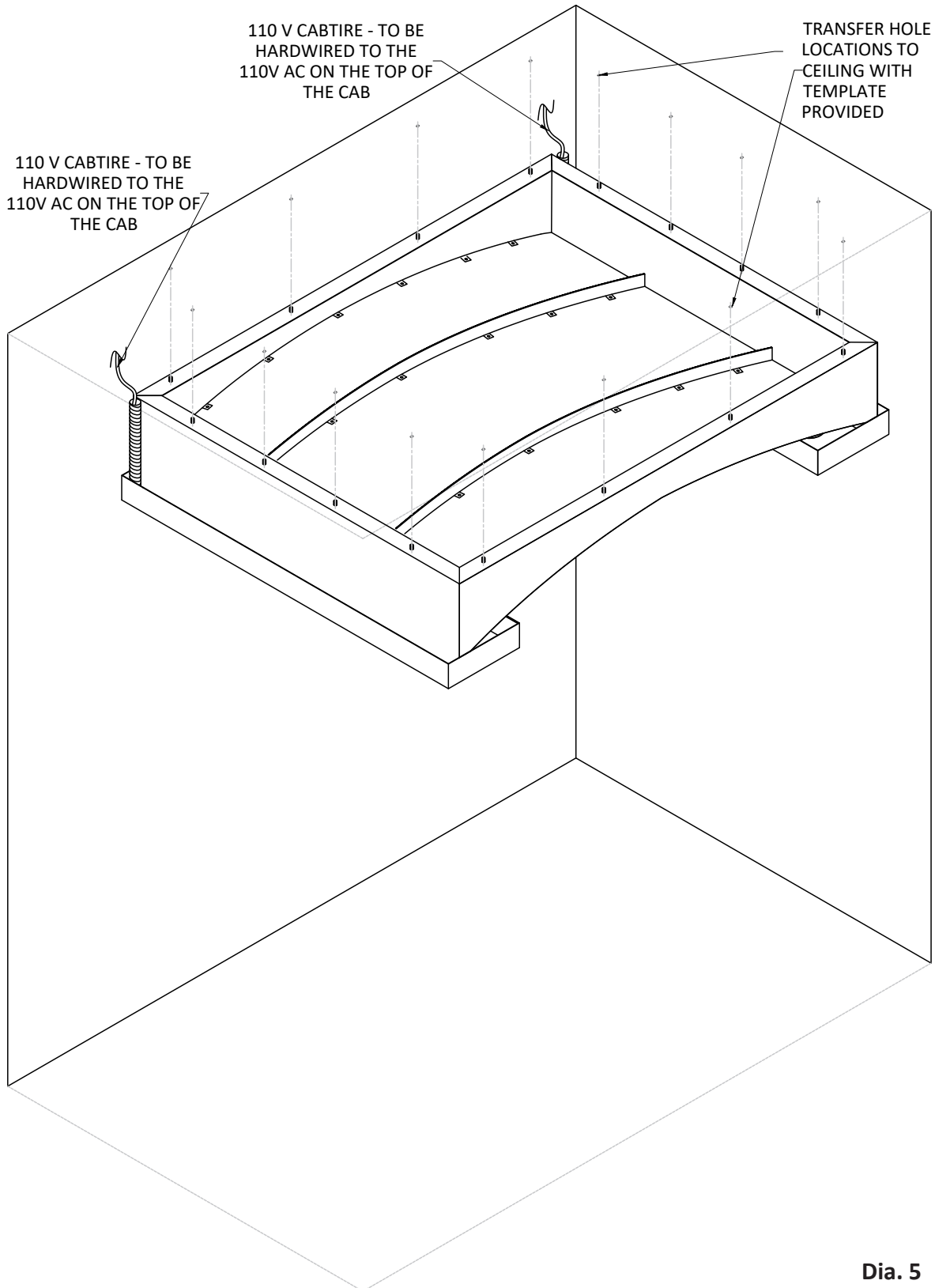
Dia. 4
Genie ceiling lift.



WARNING: Do not lift the vaulted ceiling on the center pans (curved for the Vale ceiling, straight for the Stowe ceiling). The lifter should be utilized in such a way to support the lower portion of the ceiling containing the disk lights.

SECTION 4: INSTALLING THE CEILING (CONTINUED)

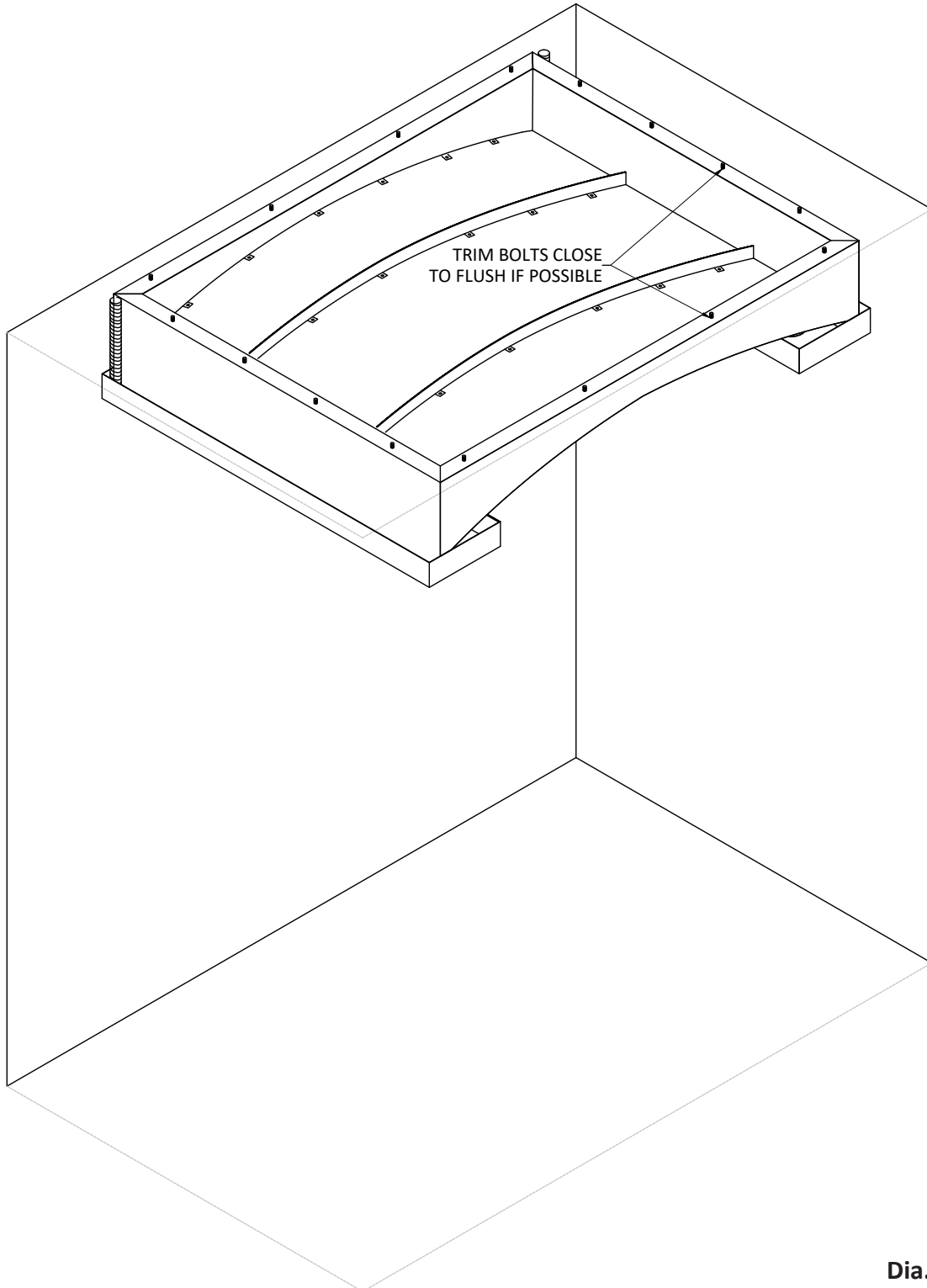
- 4.2. Run the wiring through the channels at the rear of the ceiling and connect to the utility box on the car top while raising the ceiling (Dia. 4) and securing in place.



Dia. 5

SECTION 4: INSTALLING THE CEILING (CONTINUED)

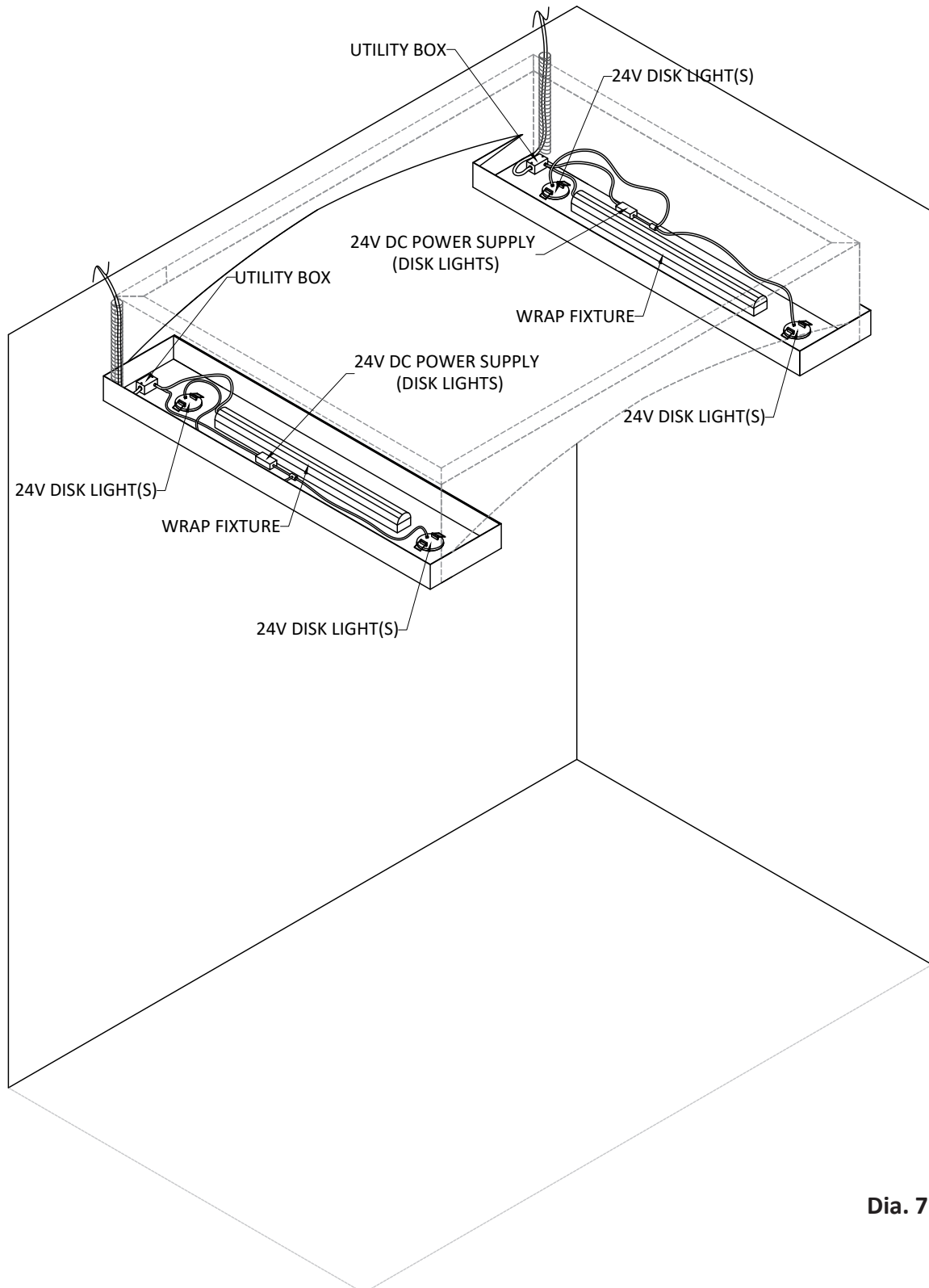
- 4.3. Lift the ceiling into place using a lifting device and secure the ceiling to the canopy with the fasteners provided, ensuring the ceiling sits firmly against the canopy (Dia. 6).
- 4.4. If possible, trim the bolts on the car top to remove potential tripping hazards.



Dia. 6

SECTION 5: COMPLETE CEILING INSTALLATION

- 5.1. Verify that all lighting is attached in the lower portion of the ceiling and connect any lighting that was not connected or has become disconnected.
- 5.2. If the ceiling hatch was removed to assist wiring, ensure it is re-installed to complete ceiling installation.



Dia. 7

GLOSSARY

Canopy:

The roof of the cab.

The top structural component of the shell.

The canopy houses the emergency hatch.

The canopy may have various electrical and mechanical components attached to its surfaces, both interior and exterior.

For technical support on the Bristol Ceiling installation, please contact us at:

Elevator Cab Renovations
Office: (613) 745-4870
Toll Free: 1-877-745-4870
ecr@elevatorcabs.ca

Office Hours : 6:30 AM to 3:30 PM Eastern Standard Time