



# FRAMED CEILING

MODEL:  
TREMBLANT  
BIG WHITE  
MARBLE MOUNTAIN

## INSTALLATION INSTRUCTIONS



## TOOLS REQUIRED

- Measuring Tape
- Drill
- Ladder
- 3” Paint Brush and latex paint for painting the canopy (If required)

## SECTION 1: UNPACKING

- 1.1. When your new Framed Ceiling arrives, transport it near to the cab you will be renovating and organize the crates so that they will be easily accessible.

The crates contents are itemized on its surface.

- 1.2. Carefully un-crate the ceiling package, making sure that none of the components are damaged.
- 1.3. Check the colours, features, and dimensions of the components against your order before you begin removing the existing elevator interior.

If you have any questions at this point, contact ECR before going ahead with any part of the installation.

For technical support on the Framed Ceiling installation, please contact us at:

**Elevator Cab Renovations**  
**Office: (613) 745-4870**  
**Toll Free: 1-877-745-4870**  
ecr@elevatorcabs.ca

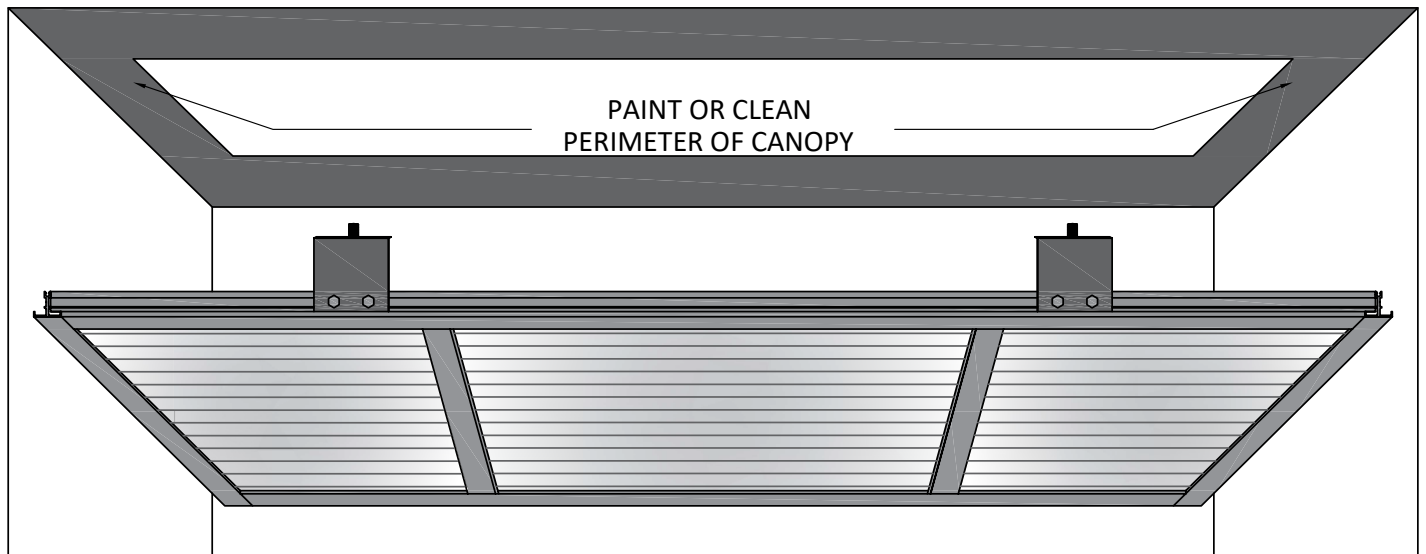
Office Hours : 6:30 AM to 3:30 PM Eastern Standard Time

## SECTION 2: PREPARE CANOPY

- 2.1. Unless specified otherwise, your new Framed Ceiling will be inset from the shell walls by 2" on all sides. Please consult drawings accompanying ceiling.
- 2.2. Prepare canopy surface to accept new Framed Ceiling by completing one of the following options
  - a) Sand, clean & re-paint the perimeter of the canopy with a desired color. Black or white are typical for this type of application (Dia. 1).
  - b) If the canopy is in good condition, a simple cleaning may be all that is required.



Note: It is suggested that for both options a or b, a minimum of 6" of the perimeter of the canopy should be addressed by the process chosen.



**Dia. 1**

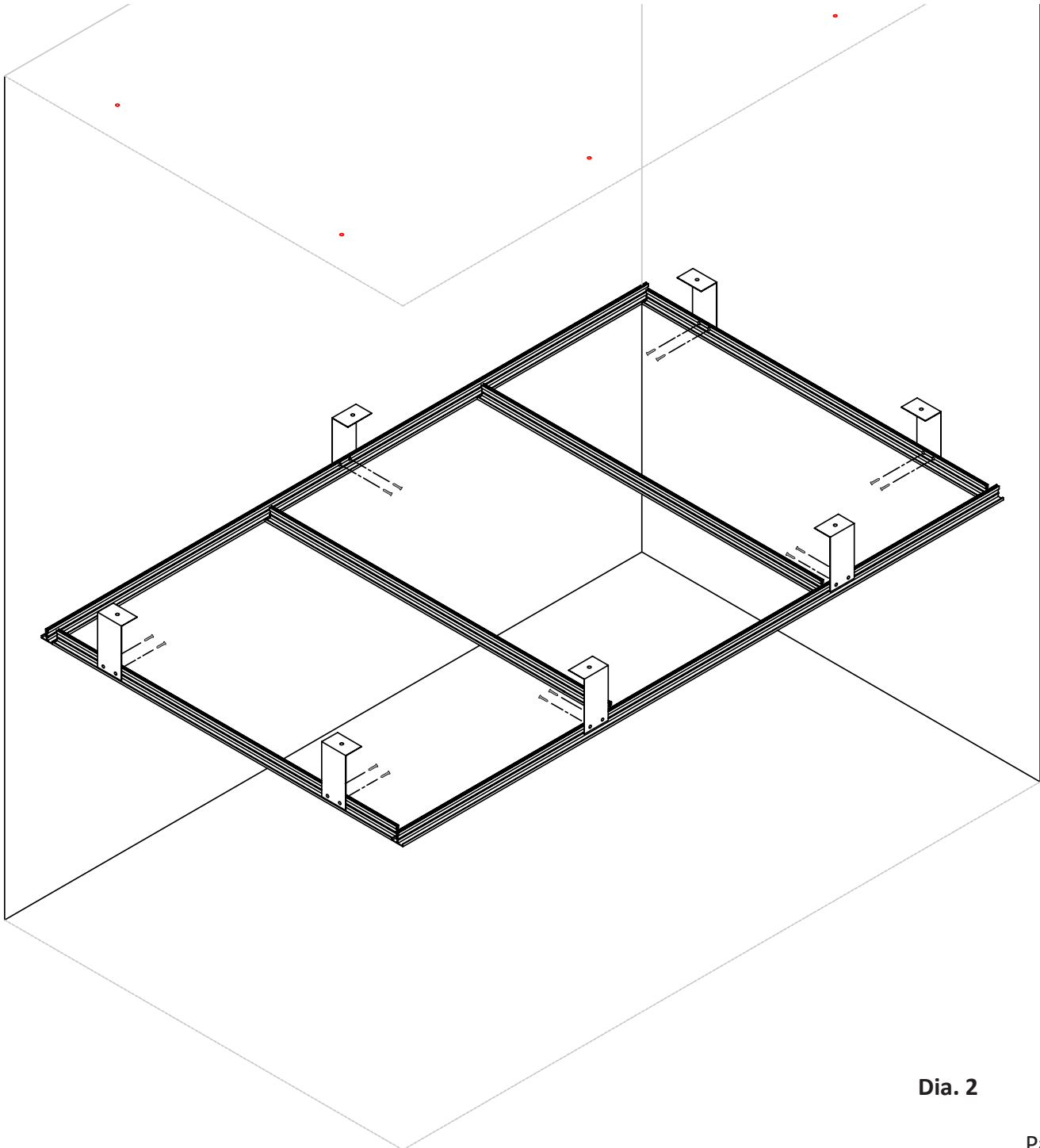
Framed ceiling preparations.

## SECTION 3: PREPARE CEILING FRAME

- 3.1. Unless requested your framed ceiling will be shipped assembled with panels in place. Light kits and support brackets are packed separately to be installed when ready.
- 3.2. The “T” frame comes with predrilled holes to attach the support brackets. The brackets can be attached to the frame using the 1/4 - 20 x 3/4 bolts provided (Dia. 2).



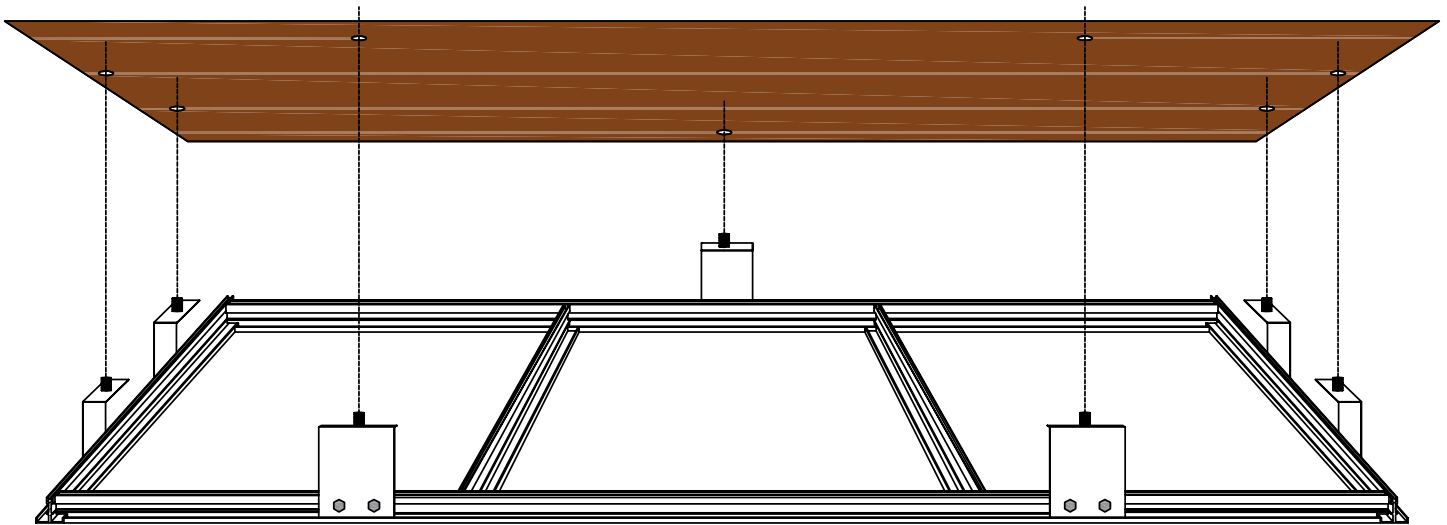
Note: The support brackets can be repositioned slightly to accommodate site conditions, however care must be taken to ensure that the brackets are located such that the lights can be securely fastened to them.



**Dia. 2**

## SECTION 3: PREPARE CEILING FRAME (CONTINUED)

- 3.3. Your ceiling includes a mounting template. This will be used to transfer hole locations from the Framed Ceiling brackets to the canopy of the cab. Determine safe locations on the car top where ceiling brackets can be installed so that fasteners are not obstructed by ribs, car top equipment, etc.
- 3.4. Place the template on top of the ceiling brackets and align it with the edge of the ceiling support frame. Once positioned, mark the mounting holes on the template and drill them out to at least 1/8" (Dia. 3).



**Dia. 3**

Framed Ceiling with mounting template.

- 3.5. Position the template against the canopy of the cab in the desired location (typically centered side to side - verify drawings accompanying ceiling) and temporarily secure into place with screws or tape. Copy the mounting holes to the canopy by marking through the template holes. Remove the template from the canopy.
- 3.6. Before drilling in the canopy, check the top of the car for any obstructions (i.e. ducts, cable, conduit etc). Progressively drill holes up to 1/2" diameter in the canopy.



Protect any exposed wall finishes prior to raising the framed ceiling into position.

- 3.7. Remove the panels and center the frame onto the canopy to locate the attachment holes.



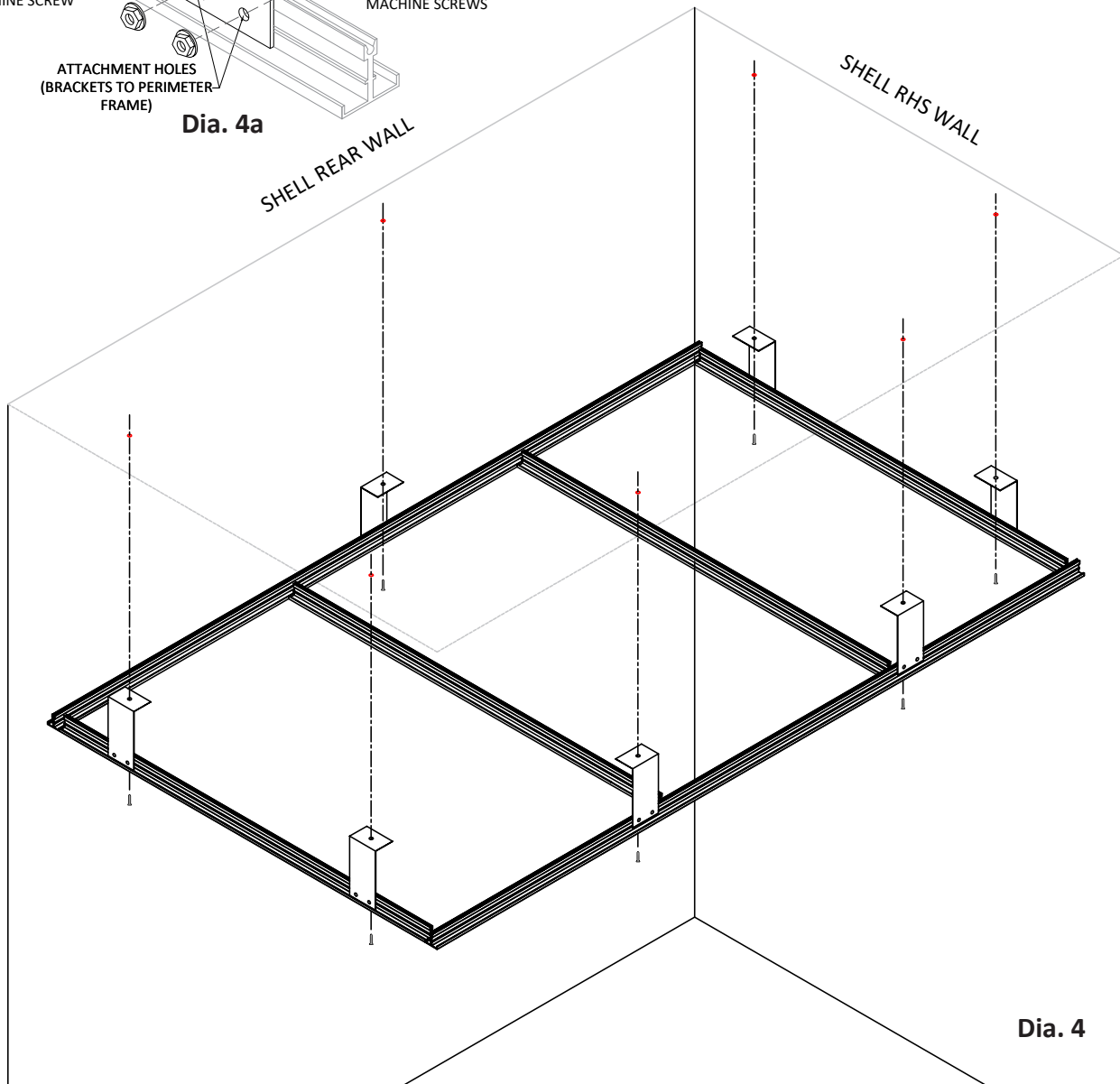
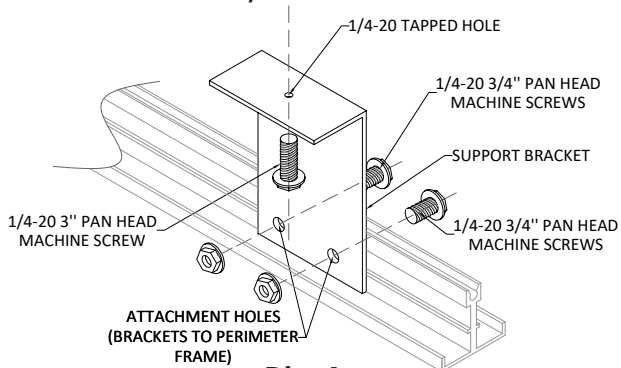
Note: Be sure to retain all the panel safety clips for re-installation.

## SECTION 4: INSTALL THE CEILING FRAME

- 4.1. The support bracket has a 1/4-20 tapped hole on the upper flange. Insert the 1/4-20 x 3" pan-head bolts provided (Dia. 4.a).
- 4.2. Attach the ceiling frame to the canopy using the 1/4-20 x 3" bolts provided (Dia. 4). Trim any excess bolts protruding from the canopy. Loctite can be applied to the nut/bolt assembly (Loctite is not included).

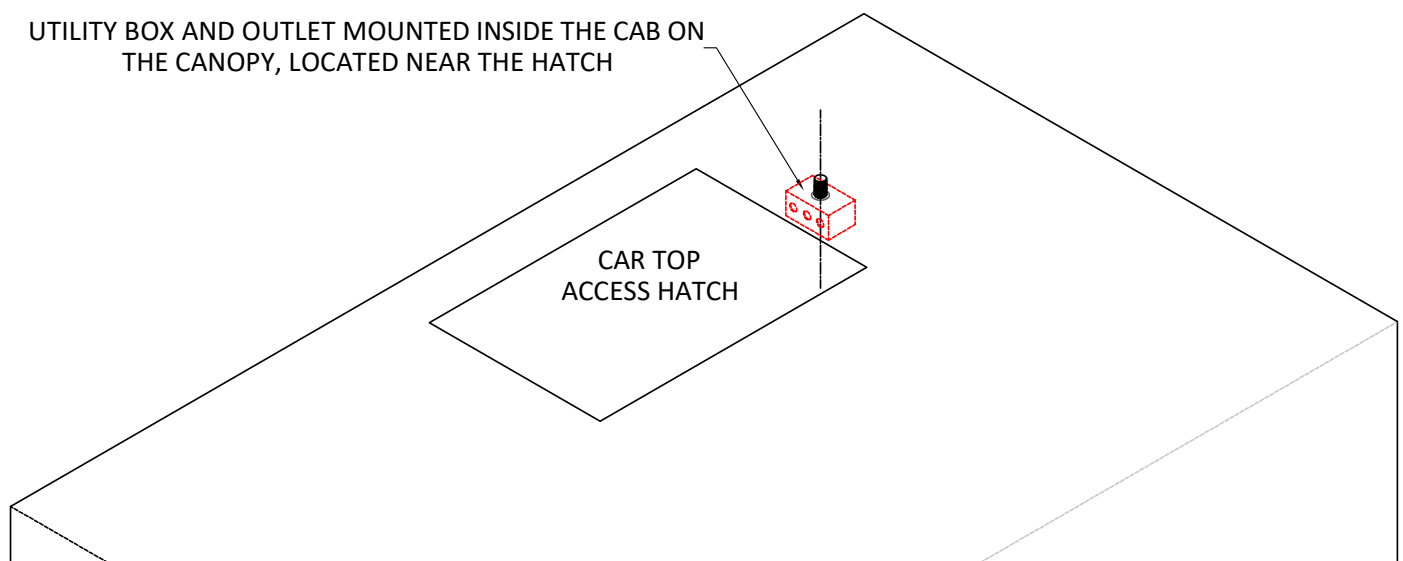


Note: The support brackets can be repositioned slightly to accommodate site conditions, however care must be taken to ensure that the brackets are located such that the lights can be securely fastened to them.



## SECTION 5: ELECTRICAL CONNECTIONS

- 5.1. The lighting system runs on 110 V AC connected into the LED wrap fixtures. The installer must provide 110V to the lighting system. The system can be hard wired (utility box and connectors are provided) (Dia.5).
- 5.2. If possible, mount the utility box close to the rear of the shell on the left or right hand side to meet the lead chosen in the lighting wiring.
- 5.3. Mount the electrical box (provided) to the canopy. Again, ensure there are no obstructions above the canopy before mounting the electrical box.



**Dia. 5**

Electrical box on canopy

- 5.4. With the hatch in the open position, connect the 110 V cab tire from the Floating Ceiling to the 110 V in from the utility box mounted previously.
- 5.5. If a dimmer was purchased, the intensity can be adjusted by accessing the dimmer through the open hatch.
- 5.6. Set the required light level for you jurisdiction (ASME A17.1-2013/ CSA B44-13):
  - a) 50 lux for passenger elevators\*
  - b) 25 lux for freight elevators\*

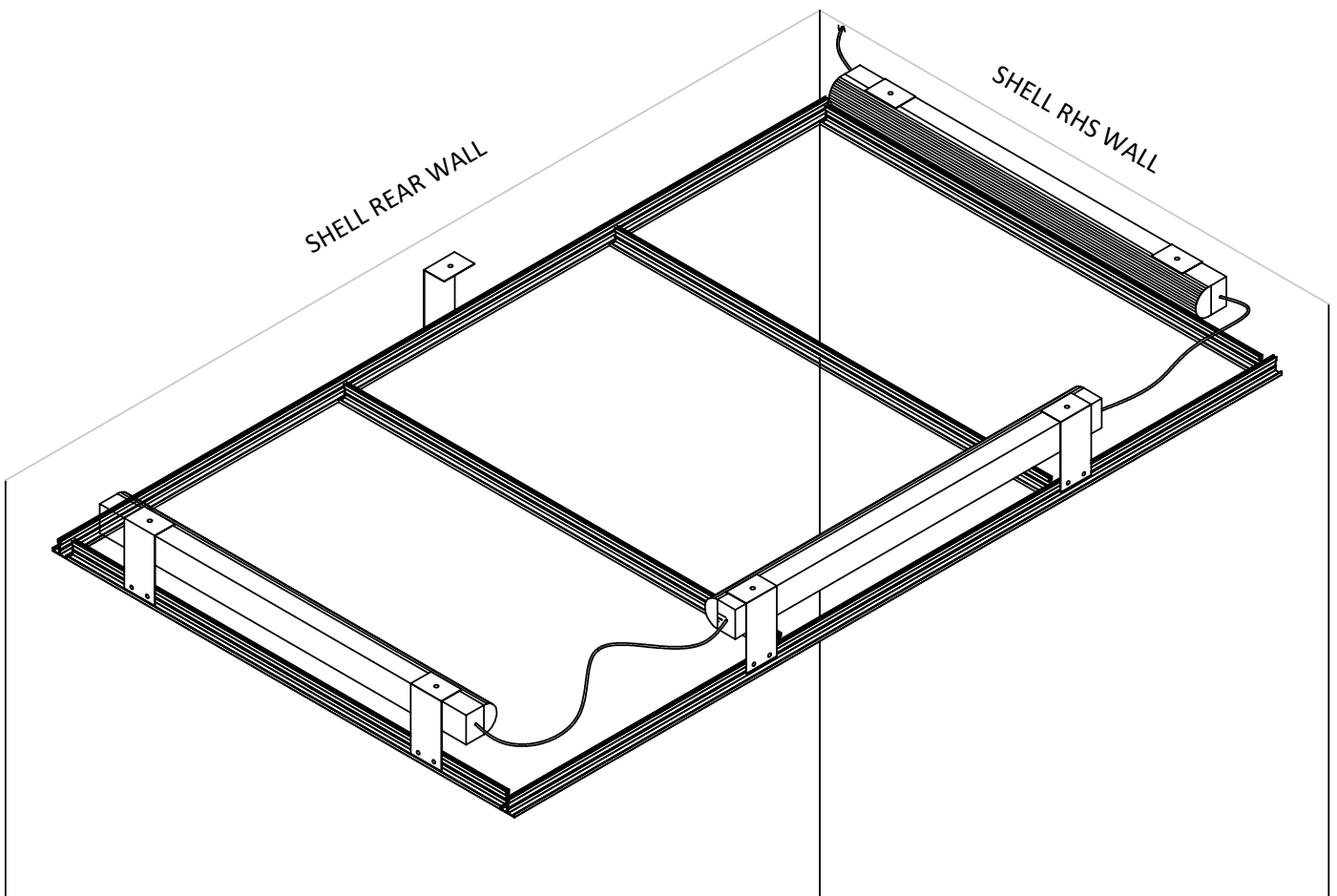
\*Appendix E 100X for passenger

## SECTION 5: ELECTRICAL CONNECTIONS (CONTINUED)

- 5.7. Disassemble the LED wrap fixtures and mount them to the ceiling brackets. Unless indicated otherwise on the drawings, install the 3 foot fixtures on the side wall ceiling brackets and the 4 foot fixture on the front wall brackets.
- 5.8. With the wrap fixtures in place, they can be wired to each other with the wire connectors provided (Dia. 6).



Note: For ceilings using polycarbonate lenses, it is important to install the lighting as close to the canopy as possible. The fluted lenses can create subtle shadow lines if the lighting is installed too close to the lenses.

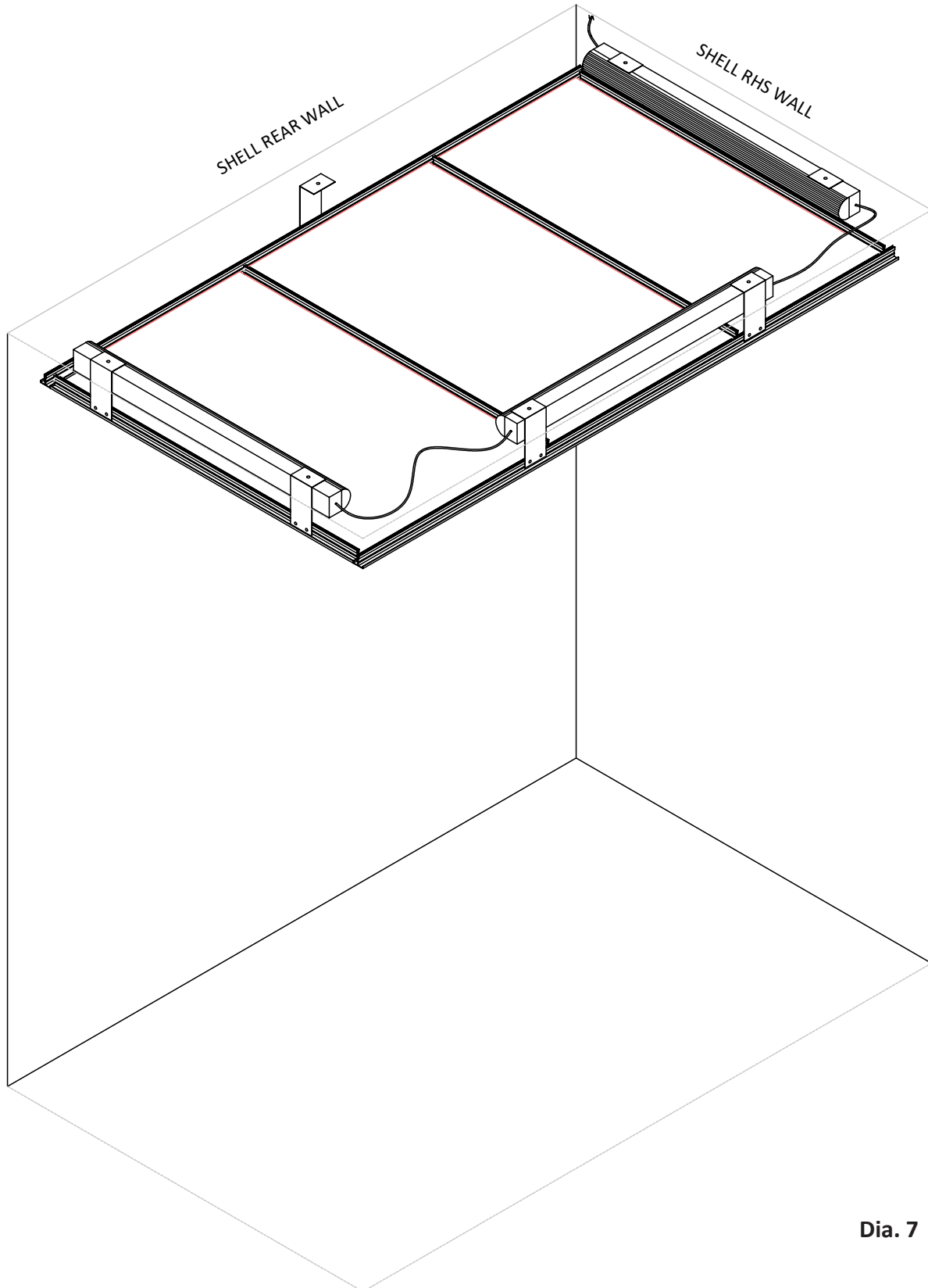


Dia. 6



## SECTION 6: INSTALL CEILING PANELS

- 6.1. Install the pre-cut aluminum egg crate or polycarbonate panels into the openings in the ceiling frame. These pieces are cut to fit snugly in the frame and may need to be pulled down to sit flat on the frame.



**Dia. 7**

## GLOSSARY

### Canopy:

The roof of the cab.

The top structural component of the shell.

The canopy houses the emergency hatch.

The canopy may have various electrical and mechanical components attached to its surfaces, both interior and exterior.

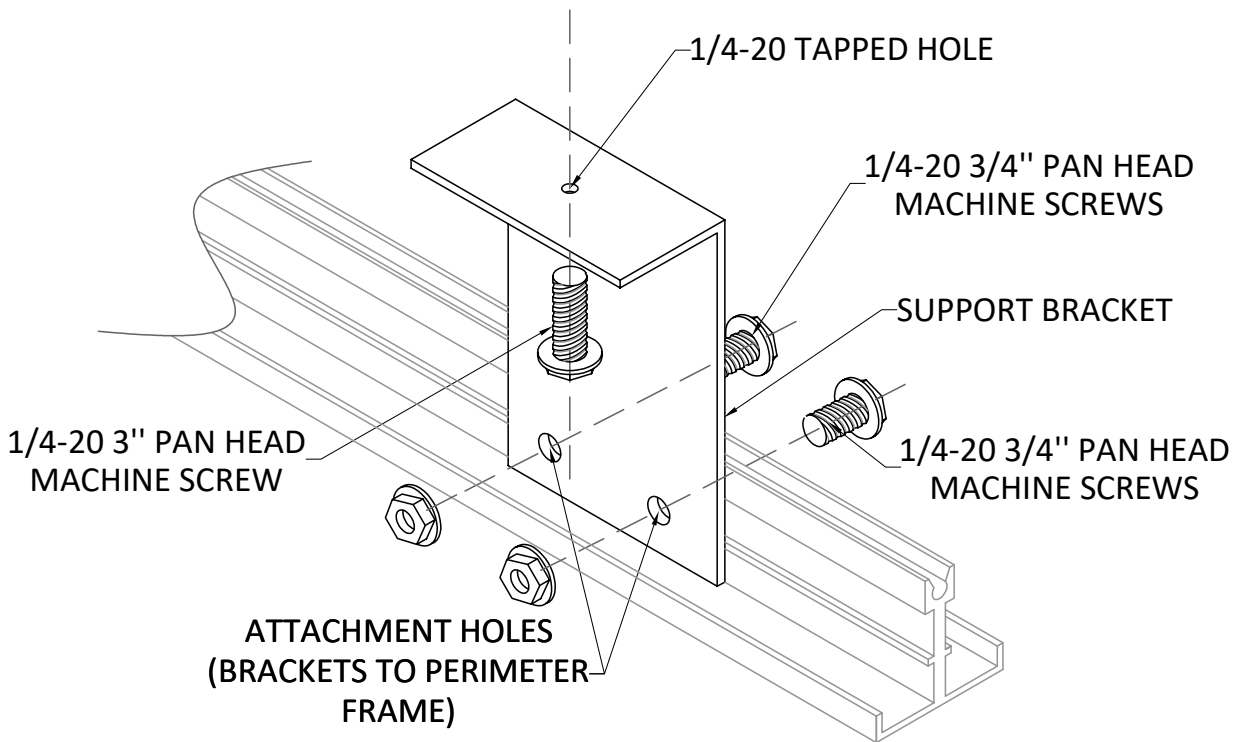
### "T" Frame:

Extruded aluminum ceiling frame shaped in a "T".

### Ceiling Brackets:

Ceiling brackets are "L-shaped" constructed of 1/16" thick steel.

Brackets are manufactured with mounting holes for 1/4-20 bolts for fast and easy installation.



For technical support on the Framed Ceiling installation, please contact us at:

**Elevator Cab Renovations**  
Office: (613) 745-4870  
Toll Free: 1-877-745-4870  
ecr@elevatorcabs.ca

Office Hours : 6:30 AM to 3:30 PM Eastern Standard Time