

PRODUCT OVERVIEW





FAST 1 CAB SHELL

The goal of the **Fast 1 (F1) Cab Shell** is high speed. Get fast pricing, fast engineering, fast manufacturing, and fast installation with the F1 Cab Shell. Designed with our **Quick Connect System**, only a nut driver, screwdriver and square required to install the cab shell, ensuring a quicker turnaround time. All shells come with pre-fitted car top kick plates.

Key Features

- **Reduced Fasteners:** Uses up to 75% fewer fasteners than other equivalent shell designs.
- **Labor Savings:** Reduces installation time by 4+ hours.
- **Simple Assembly:** Pre-numbered panels for easy identification.
- **Customizable Options:** Option for sound dampening and fully integrated car top rail kit with rails.
- **Reversible Canopy:** Allows the reinforcing ribs to be up or down.



SCAN TO LEARN
MORE ABOUT THE
FAST 1 CAB SHELL

[Click Here to Learn More](#)



CAB INTERIORS

Whether outfitting a new installation or upgrading an existing elevator, our interiors offer durability, elegance, and seamless integration tailored to match the aesthetic of any building.

Key Features

- **Durable Construction:** Protective binding on laminate panels.
- **Easy Installation:** Self-aligning panels, no trimming, only 3 measurements required.
- **Removable Pad Hooks:** Hidden hooks available for most models
- **Vented Kickplates:** Removable for floor work (non-vented kickplates are fixed).
- **Weight Class Options:** Available in Regular, Light, and Ultra Light to suit project needs.



SCAN TO LEARN
MORE ABOUT
CAB INTERIORS

[Click Here to Learn More](#)

A-LOOK SYSTEM

The **A-Look System** is an interlocking panel system where panels lock into anodized aluminum extrusions, creating a clean, seamless finish. Available in wood veneers, laminates, metals, and more, A-Look combines a modern aesthetic with fast installation and easy maintenance.

- **Reversible panels:** Available on horizontal designs in laminate and metal for extended panel lifespan.
- **Individual Panels:** Can be replaced without removing surrounding panels.
- **No Visible Fasteners:** Clean and seamless look.
- **Flexible Design:** Supports a variety of materials and finishes.
- **Quick Installation:** Ideal for fast-paced projects with a modern finish.

B-LOOK SYSTEM

The **B-Look System** is a hang-on panel system with visible stainless steel or bronze trims framing each panel. It offers a more traditional, framed aesthetic, while providing easy access for maintenance and design flexibility across wood, laminate, and metal finishes.

- **Removable Panels:** Individually for easy updates and repairs.
- **Framed panel look:** Exposed trim for a more defined aesthetic.
- **Supports:** Wood veneers, laminates, metals, and more.
- **Modernization:** Ideal for projects where quick panel swaps are required.
- **Ultralight Weight Options:** Available for projects with weight constraints.
- **Design Options:** Great for designs that call for clear separation between panels.

C-LOOK SYSTEM

The **C-Look System** is a premium clip-on panel system designed for high-end and fully custom interiors. It accommodates luxury materials like glass, stone, wood veneers, and metals. Individual panels can be removed for maintenance, and reversible panels are available for certain materials.

- **Reversible panels:** Available in laminate and metal for extended lifespan.
- **Supports:** Premium materials, including glass and stone
- **Individual Panels:** Can be removed without disturbing surrounding panels.
- **Flexible system:** Can accommodate creative, high-end design concepts.





CAR OPERATING PANELS

Designed for new installs and retrofits, our COPs combine durability, modern design, and customization options to match any interior.

- **Dover Impulse Retrofit:** Direct panel replacement for seamless upgrades.
- **Destination Dispatch Compatible:** Works with modern dispatch systems.
- **Vandal-Resistant Buttons:** Waterproof, impact-tested for heavy use.
- **Integrated Security Camera:** Optional emergency communication camera.
- **Custom Back lighting:** Red, green, blue, or white illumination options.
- **Tactile Button Finishes:** Brushed black, stainless steel, or PVD bronze.
- **Panel Materials:** Stainless steel (#4, #8), titanium brass, blackened stainless, bronze, oil-rubbed.
- **Glass COP Option:** Premium glass option for modern interiors.
- **Gilda/Surface Mount COP Available:** Flexible mounting options for retrofits and new installations.



SCAN TO LEARN
MORE ABOUT CAR
OPERATING PANELS

[Click Here to Learn More](#)

DIGITAL POSITION INDICATORS

Clear, customizable displays for any application – from compact 2” Raffaello units to large 48” Altus screens with full digital signage. Managed through **MosaicONE** for remote updates and real-time content.

- **Flexible Sizing:** Screens range from 2” to 48” to fit any application.
- **Remote Management:** MosaicONE platform allows updates and monitoring from any location.
- **Dynamic Displays:** Show floor position, weather, news, videos & building updates.
- **Easy Customization:** Online editor simplifies adding text, images, and video content.
- **Sleek Designs:** Modern styles to match any interior.



SCAN TO LEARN
MORE ABOUT
POSITION INDICATORS

[Click Here to Learn More](#)



PUSHBUTTONS & TACTILES

Durable, accessible, and designed for modern interiors, our pushbuttons offer tactile feedback, Braille options, and customizable finishes for any project. Our pushbutton range offers a variety of tactile options, from standard surrounds like Julius to slim and modern pin mount designs.



BL Blank Pushbutton
with Square Surface Mount Tactile



BL California Pushbutton
with Caesar Illuminated Tactile



BS Classic Pushbutton
with Julius Surround Tactile



Dune Pushbutton
with California Fishtail Tactile



Colossus Pushbutton
with Slimline Flush Mount Tactile



Bar Pushbutton



BS Moon Pushbutton
with Pin Mount Tactile



BS California Pushbutton
with Julius Flush Mount Tactile



BP Classic Pushbutton
with Round Flush Mount Tactile



Atoll Pushbutton
with California Fishtail Tactile



Sherman Touchless Pushbutton
with Square Flush Mount Tactile



SCAN TO SEE MORE
PUSHBUTTONS &
TACTILE OPTIONS

[Click Here to Learn More](#)



MosaicONE PLATFORM

Cloud-based platform for remote monitoring and real-time digital content management across all elevator displays — accessible from anywhere with an internet connection.

- Remote Updates: Manage and update content from any location with an internet connection.
- Custom Content: Upload images, videos, branding, and announcements.
- Scheduled Messaging: Automate content delivery for seamless communication.
- Integrated PI Display: Combines position indicator with dynamic signage in a single screen.
- Centralized Management: Control all devices from one secure browser login.



SCAN TO LEARN
MORE ABOUT
MosaicONE

[Click Here to Learn More](#)

DIGITAL SIGNAGE

Easily create dynamic elevator displays that engage riders. Create building updates, news, weather alerts, and more using our Digital Signage Theme Editor. Update content in real time or schedule it in advance with one browser login. MosaicONE also includes ready-made templates for different building types.

- Per-floor Messaging
- Schedule themes in advance
- Widgets: Weather forecast, traffic, News (RSS feeds), Video, Image carousel, and HTML content.
- Fully customizable display: Start from scratch or use one of multiple pre-made templates.



SCAN TO LEARN
MORE ABOUT
DIGITAL SIGNAGE

[Click Here to Learn More](#)



VIDEO & MESSAGING SYSTEM

Real-time emergency communication and monitoring system ensuring passengers get help fast — even in non-verbal situations. Our answer to the 2019 code change, VMS meets IBC 2018, A17.1/B44 2019 & 2022 standards, including **Appendix K and CBC**.

- Two-Way Communication: Voice and text communication, even if passengers can't speak.
- Smart Monitoring: Differentiates real emergencies from false alarms.
- Easy Integration: Works with any controller, phone system, or call center.
- Simple Setup: Requires only power and network—no extra hardware.
- Cyber Secure: Built-in data encryption and secure cloud connectivity.
- Approved System: Only system approved for use in federal buildings.



SCAN TO LEARN
MORE ABOUT
MosaicONE VMS

[Click Here to Learn More](#)

insights

Enhance your building's performance with **insights**, a powerful web platform that leverages the existing Video & Messaging System equipment from **MAD Elevator** to deliver real-time elevator statistics and AI-powered analytics.

- Tracks elevator performance in real-time.
- AI analysis helps reduce downtime.
- Generates safety & compliance reports.
- Works with existing MosaicONE VMS systems.
- Provides data to improve tenant experience.

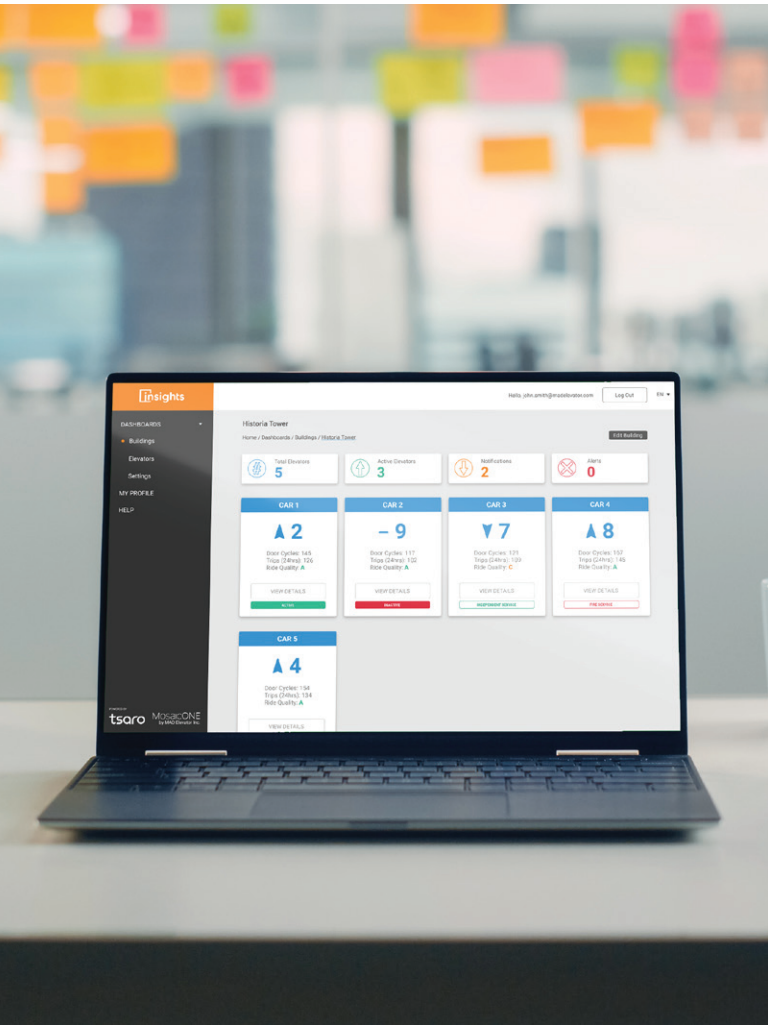
BUILDINGS NOTIFICATIONS						
BUILDING	CAR	ITEM	ACTIONS	STATUS	NOTES	
Historia Tower	CAR 2	HALL DOOR FAILURE	Replace Part	READ	Replaced X part for X issue. W...	
Maria Bay Condo S...	CAR 5	RISE QUALITY	Inspection	READ		
Maria Bay Condo S...	CAR 7	RISE QUALITY	Inspection	UNREAD		
Rose Vall...						
Rose Vall...						
The Acke...						

BUILDINGS ALERTS						
BUILDING	CAR	ITEM	ACTIONS	STATUS	NOTES	
Historia Tower	CAR 1	Car Door Malfunc...	Replace Part	READ	Replaced X part for X issue. W...	
Maria Bay Condo N...	CAR 3	Car Door Malfunc...	Replace Part	UNREAD		
The Ackerman	CAR 2	Network Down	Network Diagnostics	UNREAD		
The Ackerman	CAR 4	Network Down	Network Diagnostics	UNREAD		



SCAN TO LEARN
MORE ABOUT
insights

[Click Here to Learn More](#)





HALL FIXTURES

Premium hall stations and lanterns built for durability, style, accessibility, and seamless integration. Designed with high-quality materials and customizable options for a sleek, reliable user experience.

- **Custom Finishes:** Available in a range of materials and colors to match any interior.
- **Flexible Installation:** Suitable for both new construction and modernization projects.
- **ADA Compliant:** Designed for accessibility and ease of use.
- **Durable Construction:** Built with high-quality materials for long-term performance.
- **Code Compliant:** Meets all required safety and building standards.



SCAN TO LEARN
MORE ABOUT
HALL FIXTURES

[Click Here to Learn More](#)

DESTINATION LANTERNS

Direct passengers efficiently to the correct elevator with our range of Destination Lanterns. Choose from our Value Series and Standard Series or opt for a custom design.

With a variety of illumination, fixture, plate finish, and letter type options, we can match the design of your building. Puck replacement and Ray Blade lanterns are also available.



SCAN TO LEARN
MORE ABOUT
DD LANTERNS

[Click Here to Learn More](#)



HALL STATIONS

Achieve optimal quality, aesthetics, and code compliance with our customizable hall stations. With a range of options for illumination, buttons, fixtures, and finishes, you can customize your hall station to match your building design.

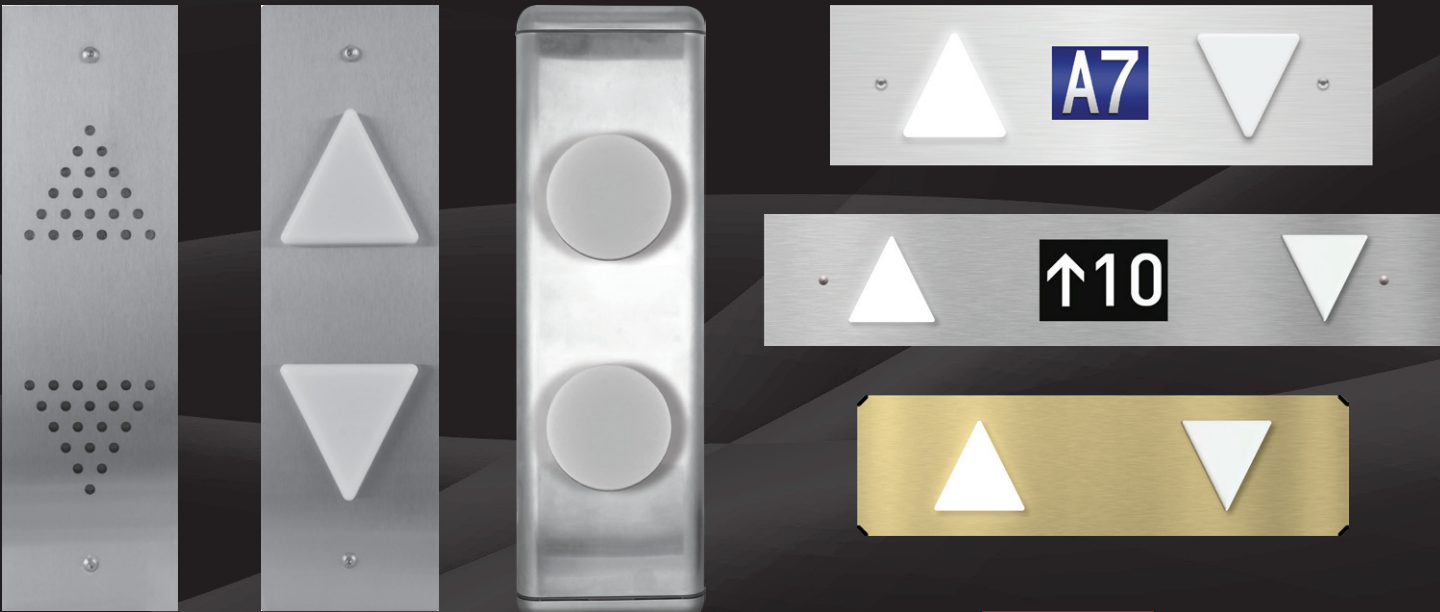


SCAN TO LEARN
MORE ABOUT
HALL STATIONS

[Click Here to Learn More](#)

HALL LANTERNS

Match your building aesthetics with our customizable hall lanterns. With a variety of materials (stainless steel, bronze, glass) and mounting options to choose from, you can achieve your desired look and feel while ensuring optimal performance with bright LED illumination.



SCAN TO LEARN
MORE ABOUT
HALL LANTERNS

[Click Here to Learn More](#)



TOUCH-TO-GO TOUCHSCREENS

The fully customizable **Touch-To-Go Touchscreens** offer a sleek, modern alternative to traditional elevator pushbuttons. Designed for intuitive navigation, real-time updates, and an enhanced passenger experience, these touchscreens bring smart functionality and contemporary design to any elevator system.

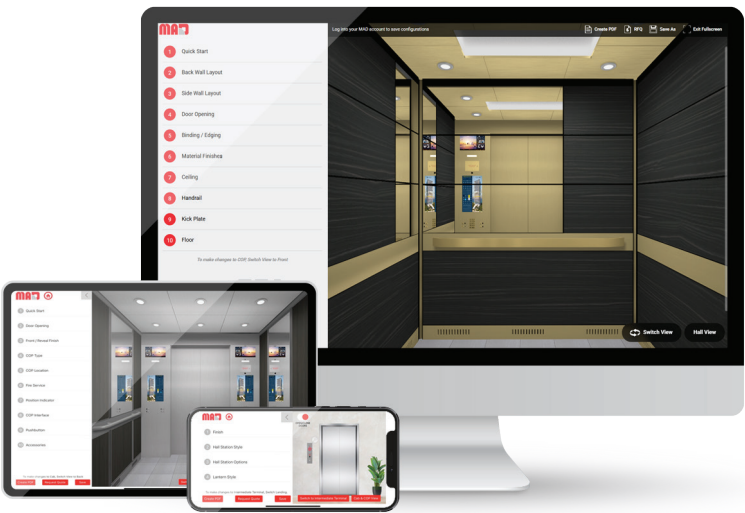
- **Custom Branding:** Fully customized designs created for the building.
- **User-Generated Areas:** Upload logos, videos, announcements, and seasonal content using MosaicONE Digital Signage.
- **Accessibility Functions:** Supports destination dispatch, fire service, medical emergency modes, and other security features.
- **Guest Services:** Displays building info, tenant messages, and wayfinding.
- **Space Optimization:** Fits more buttons in less space with clear labeling.
- **Easy Maintenance:** Durable glass cleans easily with approved solutions.



SCAN TO LEARN
MORE ABOUT
TOUCHSCREENS

[Click Here to Learn More](#)

ELEVATOR CONFIGURATOR



The Elevator Configurator makes designing your elevator a breeze with real-time 3D visuals, customizable materials, and seamless collaboration—ensuring fast, accurate, and build-ready results.



SCAN TO CUSTOMIZE
YOUR ELEVATOR
INTERIOR & FIXTURES

[Click Here to Learn More](#)

- Interactive real-time changes allow users to mix and match perfect interior, COP and hall combinations.
- Customize individual panel materials and glass.
- Request a quote directly from the MAD Cab Configurator.
- Export a PDF of your design for your records and for approval from your customers.
- Save your configurations to your online account.
- Reduce approval time and drawing revisions by using MAD Cab Configurator before ordering.

REPLACEMENT PARTS

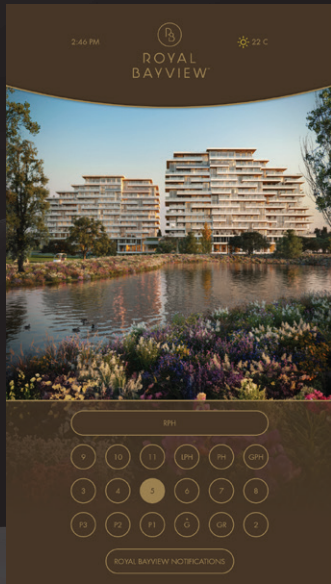
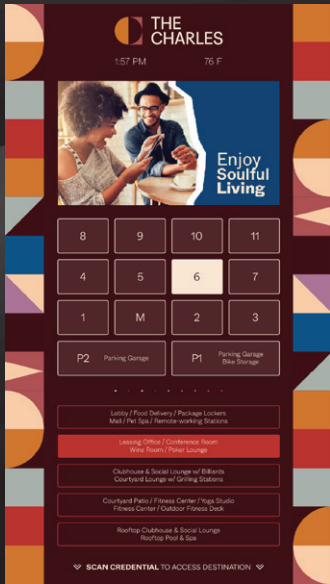


Ordering replacement parts is easy! Open the camera on any smart device and scan the QR code on the back of your MAD fixture to be brought to our online ordering page with a full assembly of that job.



Scan QR Code to order parts
Model # 1234-CM1-114
Serial # 000532451214078
www.madelevator.com
Phone: 1-866-967-8500

Example Sticker



LEARN MORE
ABOUT OUR APPS!
[Click Here to Learn More](#)





6635 Ordan Dr,
Mississauga, ON
L5T 1K6
Canada

1 (866) 967-8500
madelevator.com
sales@madelevator.com

This publication is for general informational purposes only. Product design and specifications are subject to change without notice. Actual product colors and finishes may vary.

Copyright © 2025 MAD Elevator Inc.

Ver. 1.0