



C-LookTM

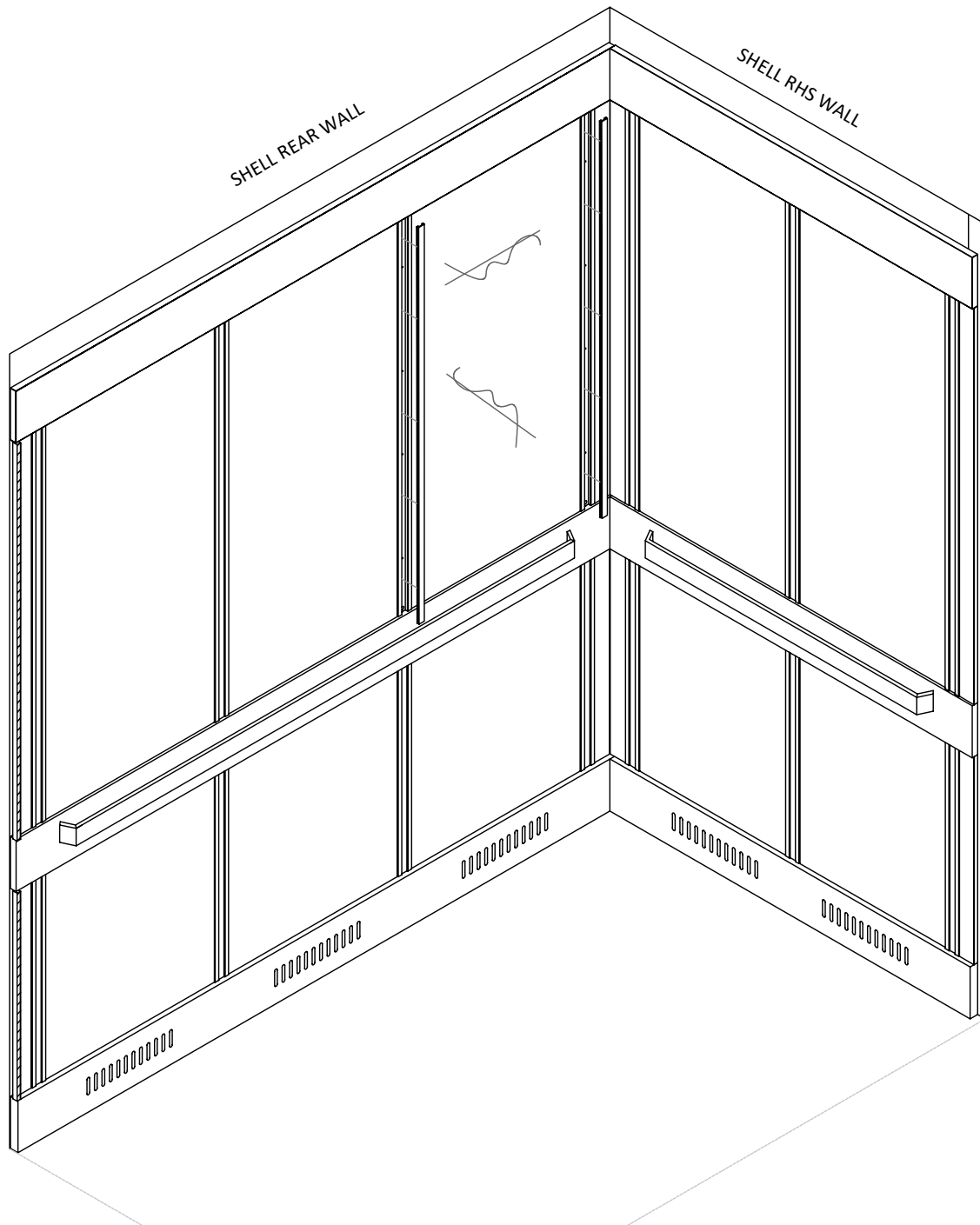
PANEL FITMENT SYSTEM

MODEL:
REVERSING THE C LOOK PANEL SYSTEM



SECTION 1: REVERSING THE C LOOK PANEL SYSTEM

- 1.1. Begin by identifying the panel(s) to be reversed.
- 1.2. Carefully remove the black C Look inserts along both sides of the damaged panel. This will expose the fasteners holding the panels to the wall.



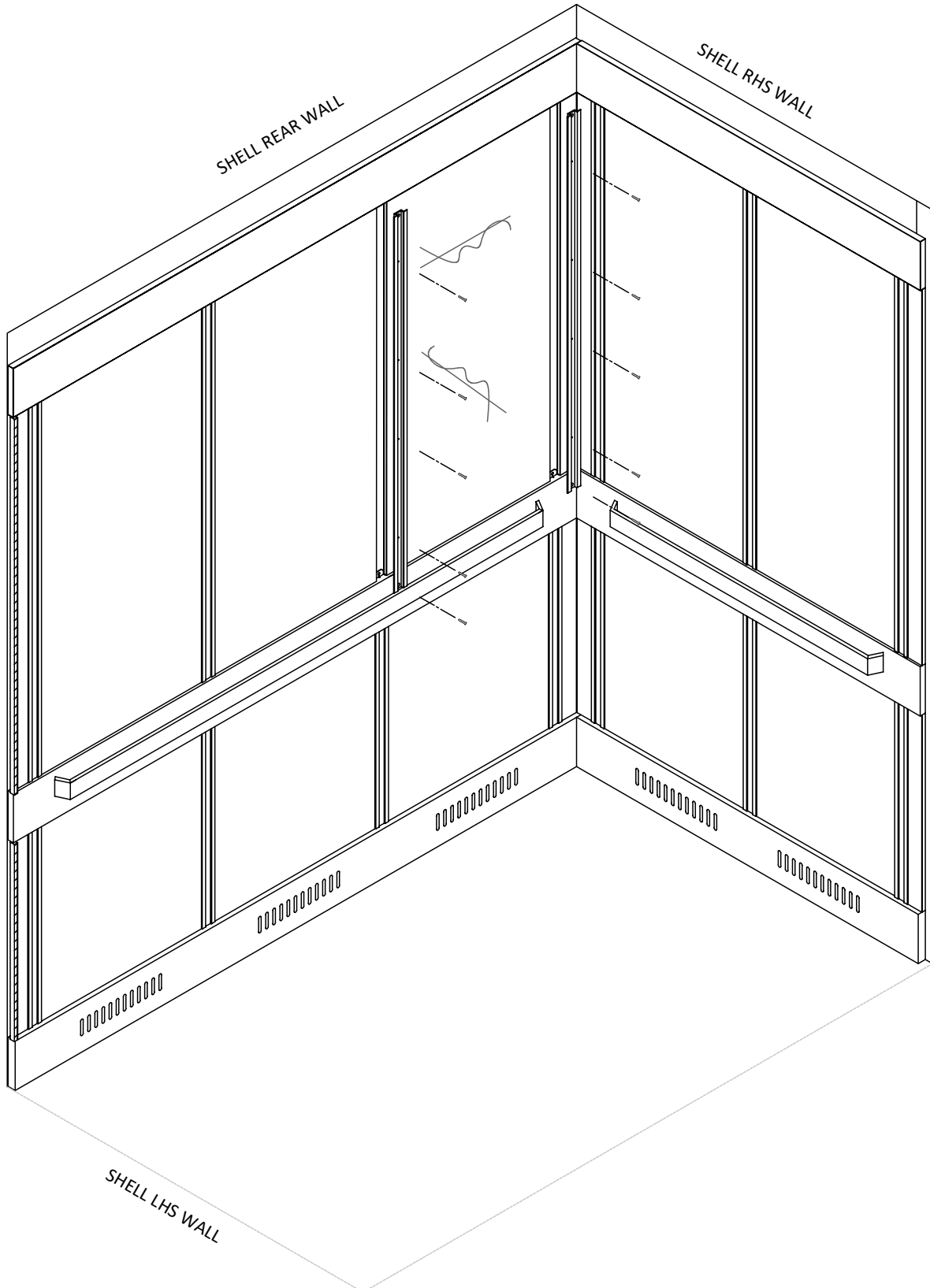
Note: Take extra care removing the C Look inserts so as not to damage them; use a dull, flat tool to begin removing the insert, following with gentle force to remove it completely.

SECTION 1: REVERSING THE C LOOK PANEL SYSTEM (CONTINUED)

1.3. Remove the fasteners from the extrusion; this will release the panel from the wall.

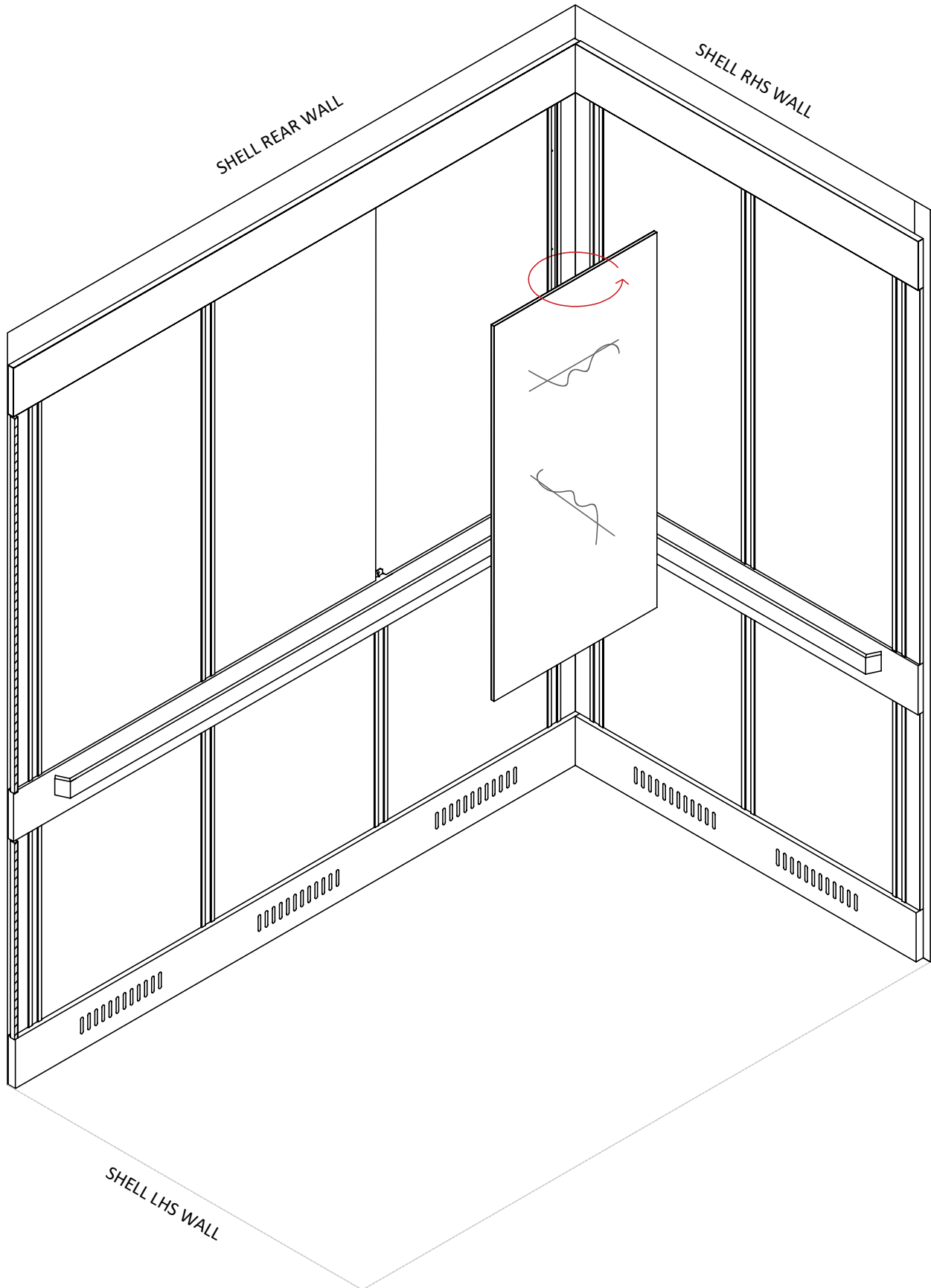


Note: When removing the extrusions, take extra care to ensure adjacent panels do not fall off the wall while reversing the panels.



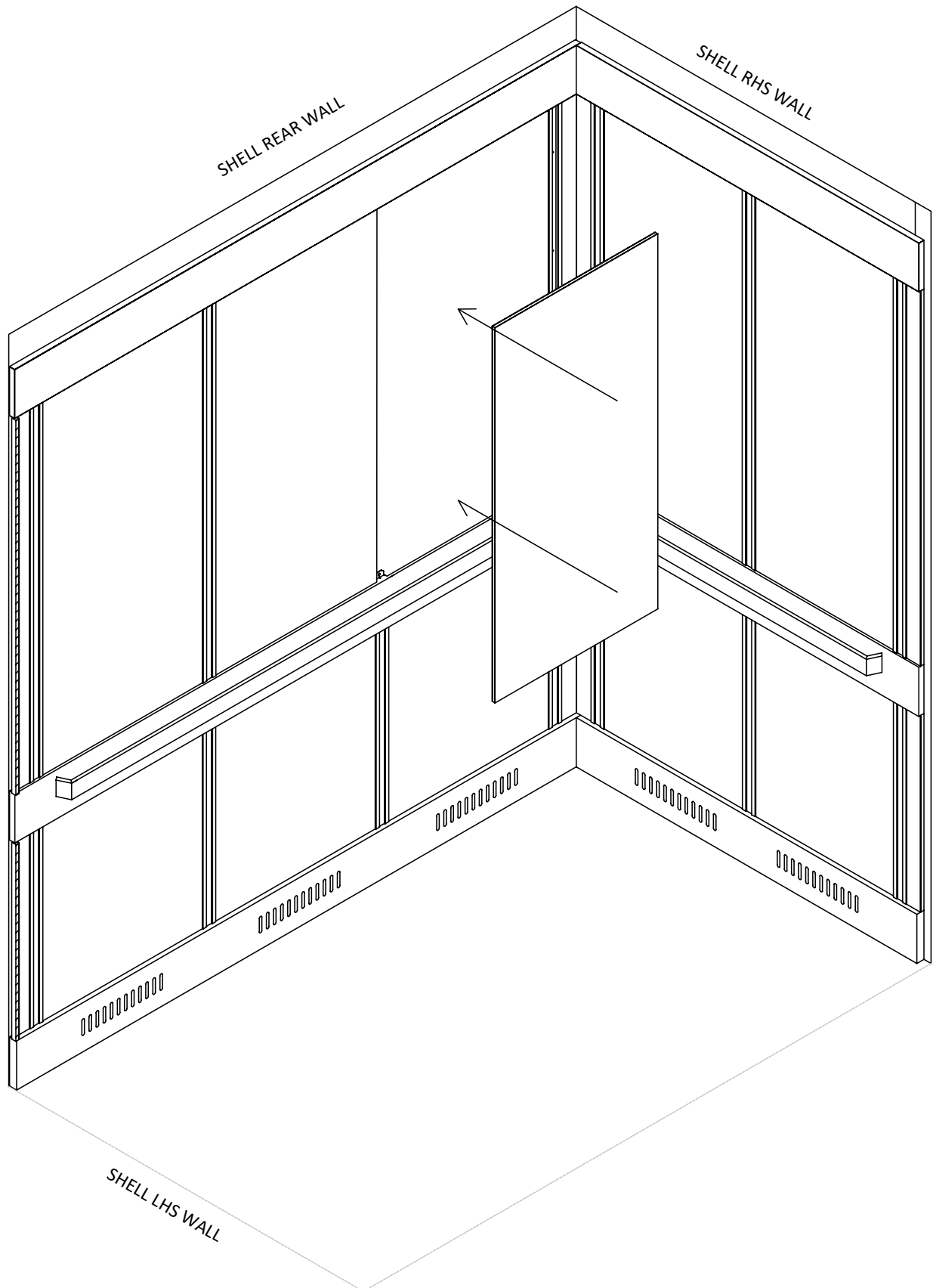
SECTION 1: REVERSING THE C LOOK PANEL SYSTEM (CONTINUED)

1.4. With the panel free, remove the panel and reverse it.



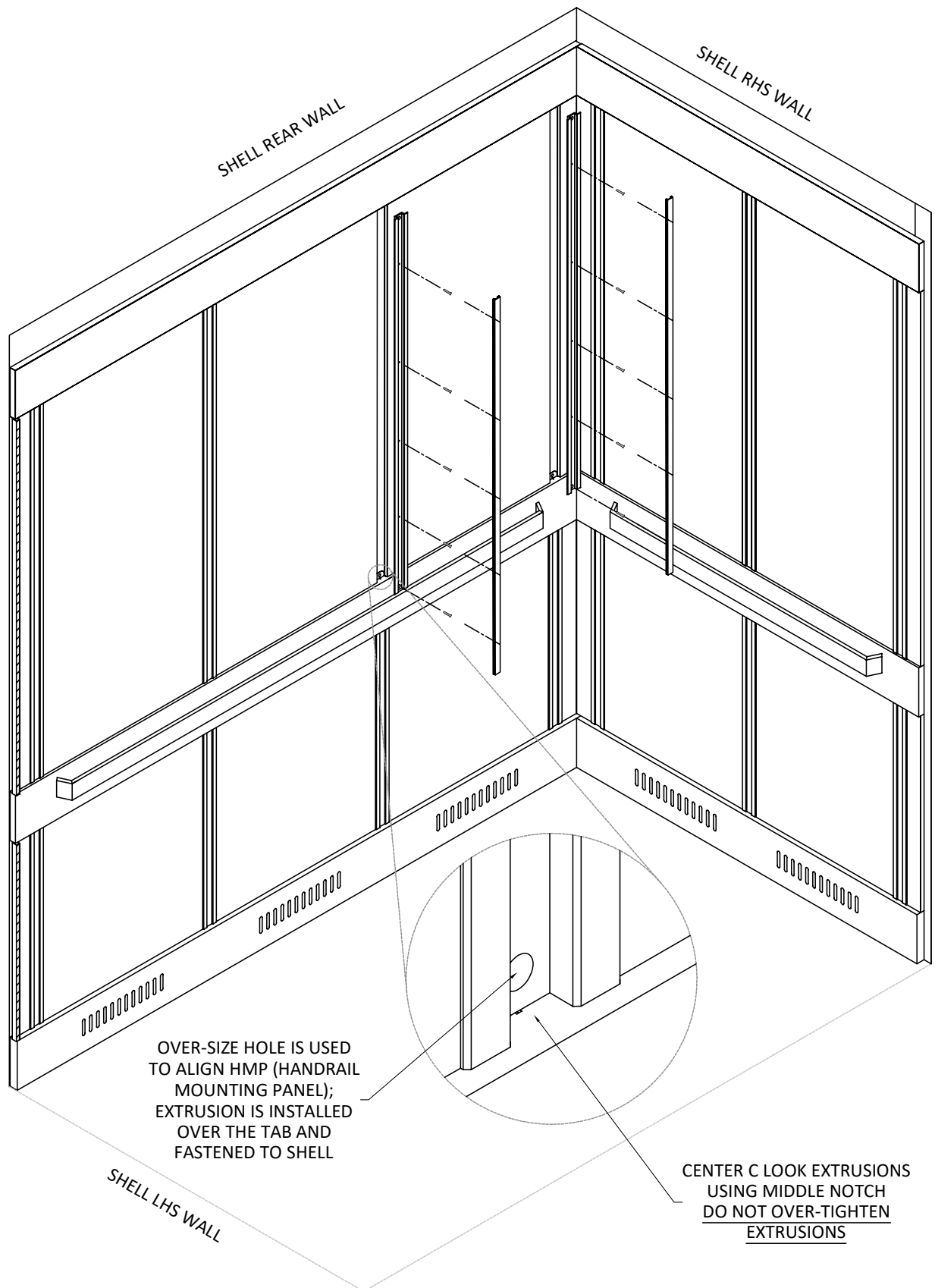
SECTION 1: REVERSING THE C LOOK PANEL SYSTEM (CONTINUED)

- 1.5. Seat the reversed panel back in place, centering it between the alignment tabs on the top cap and handrail mounting panel.



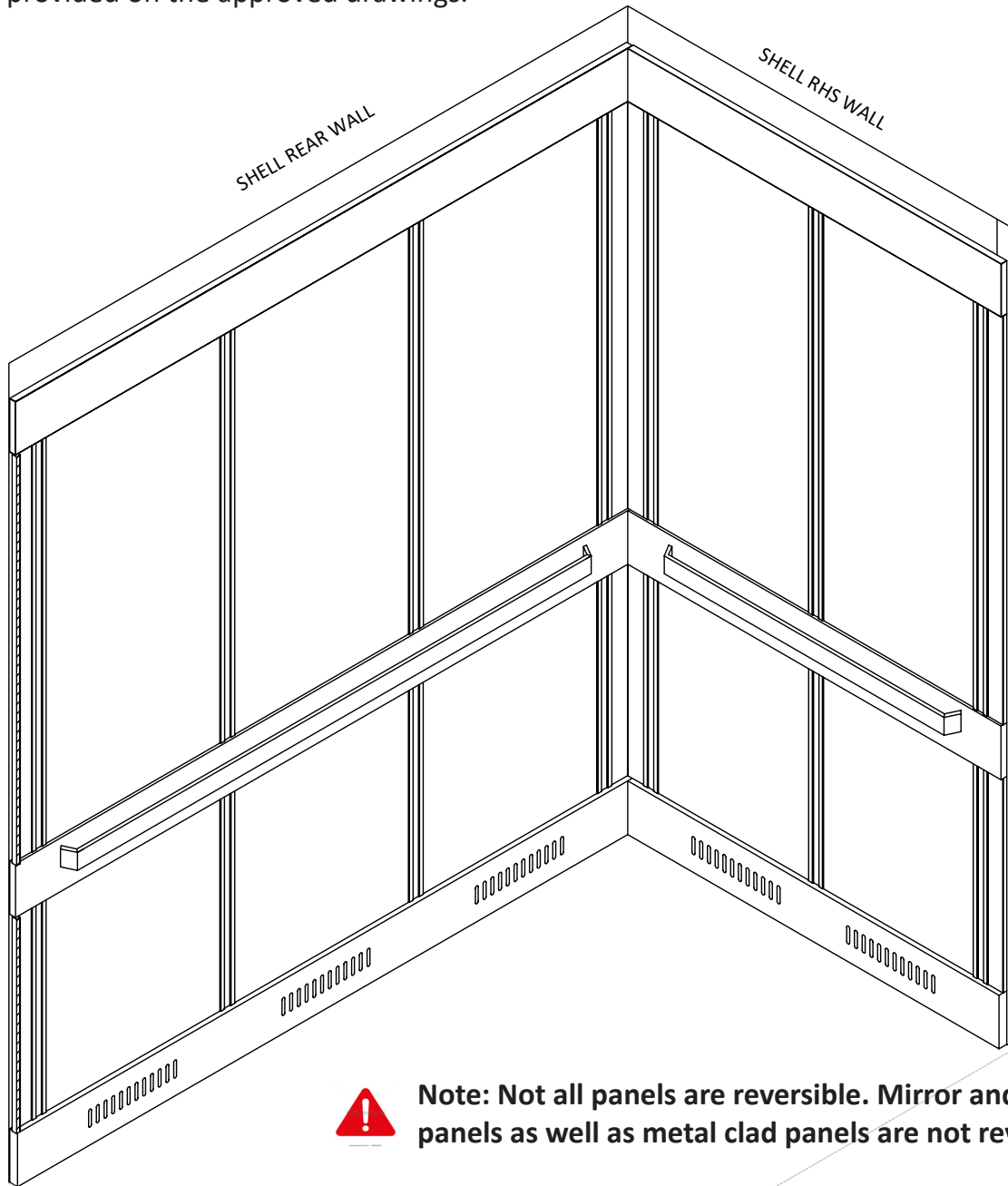
SECTION 1: REVERSING THE C LOOK PANEL SYSTEM (CONTINUED)

- 1.6. Refasten the panel by aligning the extrusions with the alignment tabs and re-fasten the extrusions to the shell wall. Snap the inserts back in place to cover the fasteners in the extrusions.



SECTION 1: REVERSING THE C LOOK PANEL SYSTEM (CONTINUED)

- 1.7. Your C Look panel system is now ready. This process can be repeated for any laminate panel, however glass panels and some metal finish panels are not reversible; this information will be provided on the approved drawings.



Note: Not all panels are reversible. Mirror and glass panels as well as metal clad panels are not reversible.

For technical support on the C-Look Panel installation, please contact us at:

Elevator Cab Renovations
Office: (613) 745-4870
Toll Free: 1-877-745-4870
ecr@elevatorcabs.ca

Office Hours : 6:30 AM to 3:30 PM Eastern Standard Time